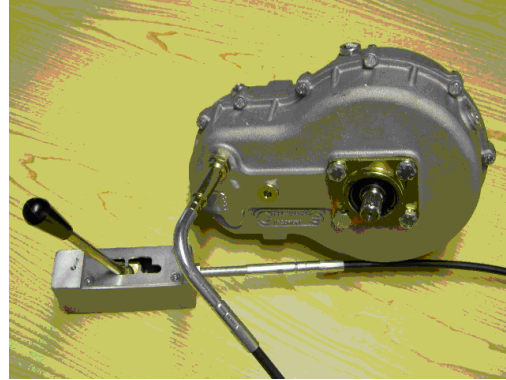
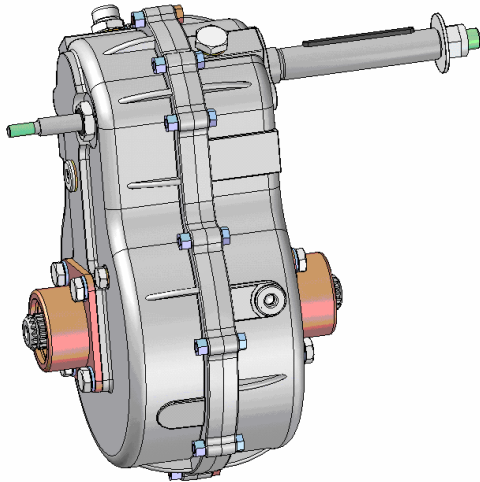


Part number TG024000 Model: GEAR BOX SD2/1



Expressly developed and manufactured in the field of small engine cars up to 6 HP.

The gear box 24000, with two forward speeds, allows making full use of the engine power, thanks to the ideal drive gear ratios in the different use conditions.

The device lightness, together with the special bearings, makes low energy consumption possible, in the meanwhile the helical lapped toothing of the gear units, carried out by special steel hardening material, reduces the noise level, as well the transmittable power reliability.

Application fields: Mini cars, agricultural devices, three-wheelers, golf cars.

Fulfilment: differential gear box with two forward speeds. Helical lapped toothing gears.

Drive gear ratios: From 29:1 to 14,5:1.

Gears: two forward speeds.

Out-put maximum torque: 1.000 Nm (500 Nm at any semi axel)

Lubrication oil quantity: 0,850 Kg.

Accessories: Intake for odometer with different ratios compare the wheel diameter, remote control with gear selector.

THE OUT-PUT AND ENGINE SHAFTS CAN BE DRAWN IN DIFFERENT SHAPE AND DIMENSIONS AT SPECIAL CUSTOMER REQUEST.

WEIGHT WITHOUT ANY ACCESSORY UNITS: 12 Kg.